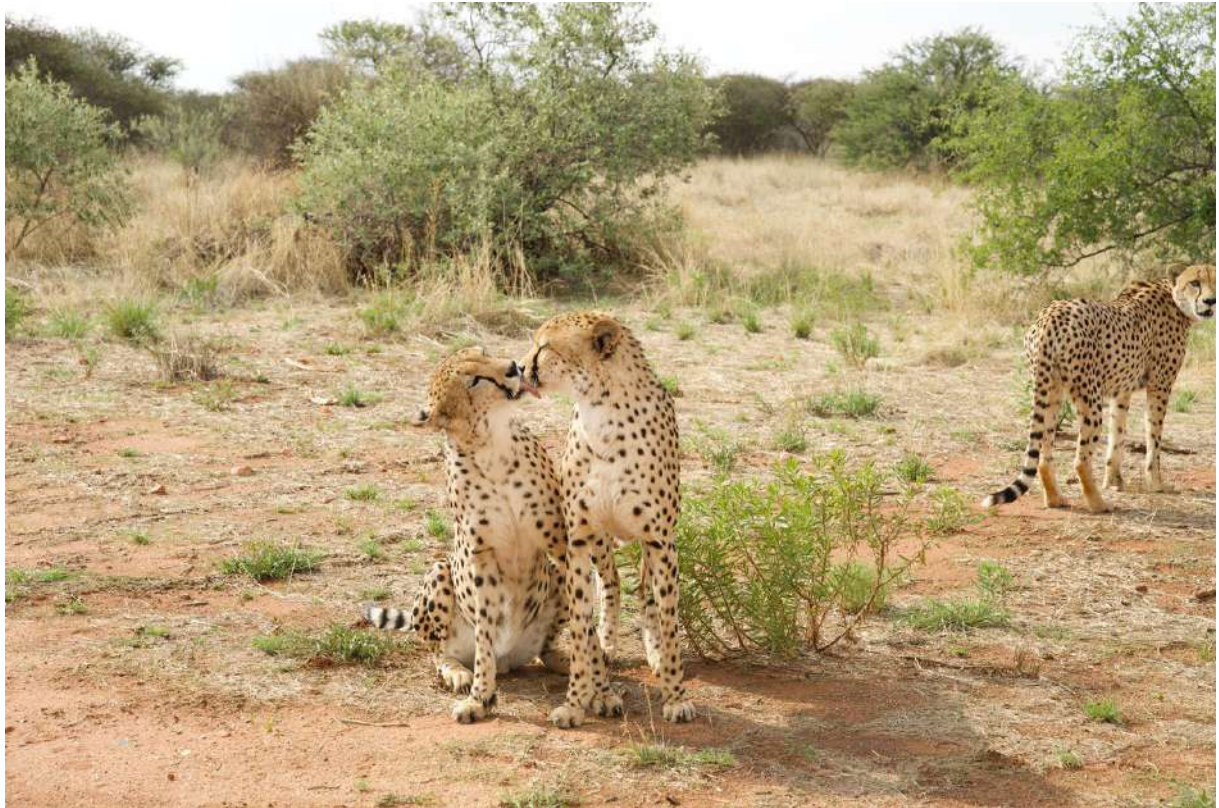




Wildlife Rescue Project in Namibia



Overview

Originating as a small wildlife sanctuary nestled in the Namibian bush, just 45km from Namibia's capital, Windhoek, the Wildlife Sanctuary Foundation has grown into a world-famous conservation organisation, providing a safe haven and second chance for countless injured, orphaned and conflict animals. Whenever possible their goal is to release animals back into the wild - only those animals too ill, abused or habituated remain at the sanctuary. The volunteers are critical to enabling the project to continue caring for the animals.

Project details

- Arrival Day: Monday
- Departure Day: Monday
- Airport: Windhoek Hosea Kutako Airport (WHK), Namibia
- Min Duration: 2 weeks

Project highlights

Volunteers will have the rare and exciting opportunity to actively participate in the conservation, rehabilitation, care and research of African wildlife. The sanctuary currently provides a safe refuge for orphaned, injured or conflict wildlife including several lions, leopards, cheetahs, wild dogs, caracals, warthogs, antelope and baboons as well as a host of birds, smaller African mammals and farmyard animals.

Wildlife Conservation Volunteers are crucial in helping to care for the animals in rehabilitation or permanent captivity at the sanctuary, as well as helping to maintain and develop the sanctuary.

This is an exceptional opportunity to get hands on experience with African wildlife and the many aspects of their care. All routine aspects of the programme are carried out in a rotational group system to ensure that everybody gets exposed to the variety of experiences available. For the full experience and understanding of what the project does, we highly recommend that you book at least three weeks on the project.

Volunteer tasks

Duties that do not directly interact with the animals are still crucial to their well-being. General maintenance and cleaning of the grounds (for example: cutting grass to ensure there are no ticks, fleas, snakes, and spiders, and poop scooping); are regular tasks on the farm for the health and safety of all the animals in our care.

- Food preparation and small animal feeding
- Carnivore feed
- Providing intensive care for juvenile wildlife
- Cheetah run observation and the education of cheetah physiology
- Project work including building camps and new facilities, breaking down old structures, maintaining roads, fence work, assisting with the various projects that arise at the sanctuary and much more
- Monitoring high-profile species on the reserve
- Spoor tracking of reserve animals. Join skilled trackers to identify game and carnivore numbers and learn the ins and outs of animal populations
- Rhino Rangers "Lite": *This activity provides a taste of the freestanding "Rhino Rangers" program itself and includes: Tracking, overnighing in the bush, own food preparation and wildlife monitoring*
- Focused research:
 - ✓ monitoring free-roaming carnivores
 - ✓ analyzing camera traps
 - ✓ analyzing GPS data
 - ✓ research on the Reserve

- Game counts on horseback
- Attending conflict calls (if they arise)

As a volunteer, you will be able to experience each of the various jobs on the farm; as the tasks are rotated among the volunteers to ensure each person has an opportunity to both help with farm maintenance and interact with the animals equally.

Example itinerary

The volunteering schedule works on a rotational group system, which ensures every volunteer gets to experience as many of the activities as possible.

The groups work two to three activities a day between the hours of 8am and 5pm. Volunteers get a short break in the morning followed by lunch from 1pm-2:30pm.

Weekends are not part of the rotation schedule; on Saturdays, volunteers will participate in certain activities in the morning, and in the afternoon there will be a fun non-work related activity followed by a braai (barbeque). On Sunday, a small team will participate in food prep in the morning and a different small team will participate in the afternoon, so you will have half the day off. All non-working hours are free time to explore the sanctuary!

Please note that from time to time there can be unavoidable changes to projects. These can be caused by weather, conservation priorities, materials supply, or because ongoing projects have progressed more quickly or slowly than originally planned. We ask you to accept the changes – we are sure that you will enjoy the replacement projects just as much.

Volunteer requirements

- Completed application form
- Basic level of competency in English
- Copy of return flight itinerary
- Medium level of fitness

What's included

- Airport pick up from Windhoek International
- Accommodation
- Three meals a day
- Transport to and from the project
- 1 x green uniform sets (pants and shirts)
- 24 hour support and supervision
- Donation to the project
- Certificate of appreciation

Meals Volunteers will receive 3 meals a day:

Breakfast consists of cereals, fruit, yoghurts, toast and spreads

Lunch varies from cold to hot meals for example: wraps, salads, pasta dishes, sandwiches

Dinner consists of a hot meal such as a traditional BBQ (braai), stews, chicken dishes, etc.

Accommodation

We have two options of accommodation at the Wildlife Sanctuary. Twin or triple share tents for same gender, couples or families to share.

The furnishings are basic with comfortable single beds with bedding provided (duvets and pillows). In addition, showers and toilet facilities are communal and hot water is supplied by solar energy and therefore sometimes restricted. Power sockets for electrical items are available in communal areas.

- Volunteers will stay in tents (2 - 4 people per tent)
- All linen will be provided.
- The volunteer house is roughly 1km away from the main-house, and is safe and secure.
- Swimming pool is available.
- No visitors are permitted to enter the property unless permitted by the project leader

*** Accommodation upgrades are available. Dietary needs can be accommodated upon request. ***

Optional extra uniform costs

- Commencing January 1st, 2022, all volunteers must wear a Naankuse uniform upon arrival. The Uniform policy is to ensure that all adhere to a proper dress code and wear clothing that protects them in the Bush. The uniform should be worn while participating in activities at the Naankuse projects and remains the property of the volunteer.
- The volunteers will each receive **one shirt and a pair of pants**, however if they need more they will need to purchase extra.
- Uniform costs are as follows:
 - Shirt N\$230
 - Trousers N\$520
 - Jacket N\$570

Other projects

The main project is the Wildlife reserve next to Windhoek but 5 other projects are available in addition to the reserve.

The desert program Previously utilised as a film, photography and holiday destination, our reserve is part of the Namib Sand Sea and holds ample photographic opportunities including Namibia's iconic red sand dunes, vast open grass plains dotted with camel thorn trees as well as abundant antelope, towering mountain ranges and many other scenic features. We welcome guests who want to be actively involved in almost any of the duties which sound management requires, and those that want to experience the desert first-hand. During your visit, help the local team record wildlife information that contributes to the long-term management of the area. The main flagship species are cheetah, brown hyena, spotted hyena, leopard and a range of desert-adapted wildlife species. We're starting from scratch, so visitors can really make an impact.

The research program This project is located a few kilometres from Omaruru. It is a 25 000 ha property which will be used as a wildlife reserve with a focus on the conflict animals, whether they come from our rescue reserve or via our Response Unit Program. We aim to relocate African Wild dogs, Rhino, Elephants and Lions from our main wildlife reserve. Currently cheetah, leopard, lion, elephants and brown hyaena occur naturally on the reserve. Volunteers will therefore be involved in the related research efforts on this new reserve and the management of the animals situated on it.

The adventure week Le projet se situe dans le sud de la Namibie, en bordure du Namib Naukluft Park. Les volontaires s'impliquent dans la recherche et la protection de l'environnement au sein du désert qui abrite une multitude d'espèces sauvages. Les volontaires peuvent participer à la cartographie du terrain, aider à la capture et à la libération, au pistage, au comptage du gibier, l'installation et l'analyse, l'entretien et la sécurité de la réserve, et la protection de l'environnement. Les nuits ainsi que les couchers de soleil au beau milieu du désert du Namib sont des moments inoubliables.

The rhino ranger program : The Rhino Rangers Program immerses participants in the exhilarating realm of anti-poaching methods and challenges. Learn first-hand from the valiant anti-poaching unit (APU) whilst spending one or two weeks with the intrepid men who have dedicated their lives to guarding the 7,600- hectare Reserve. Located close to the Wildlife Sanctuary, the reserve is home to some of Namibia's most threatened species – a conservation mecca, but simultaneously a magnet for potential poachers. Get to grips with the challenges of living and surviving in the bush, Namibia's star-studded skies, the sounds of nocturnal animal activity and the roar of lions enhancing the thrill of Africa. Join the APU on their patrols, master firearm skills, navigation, tracking techniques and the science of poaching itself – to defeat you need to understand. The volunteers spend the nights in the bush in a tent. There is no electricity at the camps.

The clinic Through each of our projects, our NGO provides an important source of employment, accommodation, education and healthcare to many San families. Our aim is to give the next generation of this marginalised community the boost they need to build

a brighter and healthier future.

Our program now treats in excess of 3,500 patients annually. More than 40% of patients treated are children and over 90% are San. A large focus of our work at the Lifeline Clinic is tackling the tuberculosis and malnutrition burdens within the San population. This is achieved through both clinic-based healthcare and our outreach around the region. A number of San communities are remotely situated, accessing the clinic itself a challenging task. With malnutrition affecting cognitive development in children and causing a variety of ailments, the clinic's twice weekly feeding program is attended by up to 120 people per session. Furthermore, nutritious food is provided on a daily basis to those patients requiring intensive malnutrition treatment.

Extra information

Laundry Laundry services are available on selected days at the Wildlife Sanctuary

Internet There is NO Wifi at this project due to the poor reception. Please do make sure you purchase a Namibia Sim card and load data on it, you can purchase this at the airport upon arrival or at the project.

Location The Wildlife Sanctuary is located just 45km out of Windhoek (Namibia's capital) and 35km from Windhoek International airport, in the Khomas region of Namibia.

Shops/Grocery Stores You can book a transfer to the city center with your volunteer coordinator so that you can purchase essentials/souvenirs or food items at an additional cost of NAD200 per trip

ATM's There is an ATM at the project (not always functional due to signal problems)

We do suggest that you get cash at the ATM at the airport upon your arrival

Supervision/Co- Ordination: As the nature of the work varies, volunteers will be placed under the supervision of various staff members. The coordinators will facilitate the smooth operation of the volunteers work, stay and provide guidance where necessary.